

Three minatures from the Irish Championship at Castlebar:-

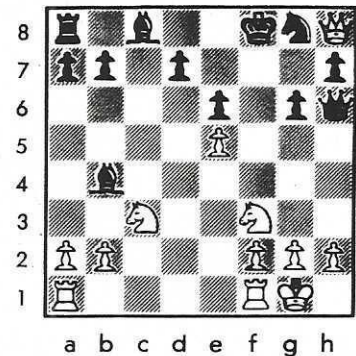
O'Tuathail - Nicholson

Morra Gambit

1 e4 c5 2 d4 cd4 3 c3 dc3 4 Nc3 e6
5 Nf3 Bb4? 6 Qd4 Nc6 7 Qg7 Qf6 8 Bh6 Qh6?
9 Qh8 Kf8 10 e5 Ne7 11 Bd3 Ng6 12 Bg6 fg6
13 0-0 (1-0).

(See diagram opposite)

Black is unable to trap the white Queen
so his position must remain in tatters.



in the Winawer French Black trades his king
bishop to inflict doubled pawns on White. The
drawback of this scheme is that Black can
suffer from dark square weaknesses, usually
along the a3-f8 diagonal. The following game
is an extreme example of this weakness.

Rea - Salter

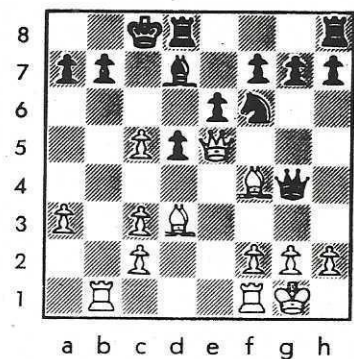
French Defence

1 e4 e6 2 d4 d5 3 Nc3 Bb4 4 e5 c5 5 a3 Bc3ch
6 bc3 Qa5 7 Bd2 Qa4 8 dc5 Nbd7 9 Bd3 Ne5
10 Qe2 Nc4 11 Nf3 Bd7 12 Ne5 Ne5 13 Qe5 Qg4
14 0-0 Nf6 15 Rab1 0-0-0??

A terrible blunder, completely overlooking
White's reply.

16 Bf4! (1-0).

Black must surrender his queen to avoid mate.
(See diagram opposite)

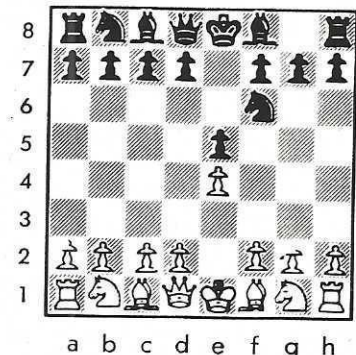


Ironin - Killane

Petroff's Defence

1 e4 e5 2 Nf3 Nf6 3 Ne5 d6 4 Nf3 Ne4 5 d4 d5

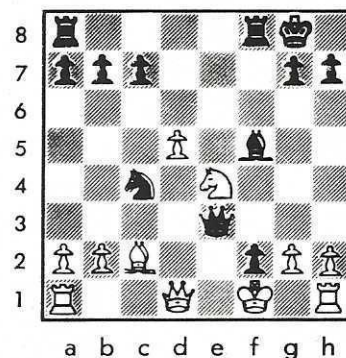
It is very surprising that the Petroff is not
employed more frequently, especially at club
strength level. Black does not have to squirm
as he does when facing the Lopez. Furthermore
a mass of theory is avoided by not replying
2...Nc6; and finally most players are not au
fait with the niceties of some of the vars.
Perhaps the deterrent is the drawish var. 1 e4
e5 2 Nf3 Nf6 3 Ne5 d6 4 Nf3 Ne4 5 Qe2.



There are many instances of this defence doing very well for itself, including some quick wins. Larsen even beat Karpov with it some while back.

Meanwhile back in Castlebar...

6 Bd3 Bd6 7 Be3 0-0 8 Nd2 f5 9 Ne5 f4
10 Ne4 Be5 11 Ng3 fe3 12 de5 ef2ch 13 Kf1
Qg5 14 c4 Nc6 15 cd5 Ne5 16 Ne4 Qe3
17 Bc2 Bf5 18 Bc2 Nc4 19 (See Diagram)
g3?



Creating a selfmate in one.

19...Bh3 mate! (0-1).

A game from round 9 featuring two ex-champions:

J.Delaney - A.Ludgate

Pirc Defence

1 e4 g6 2 d4 Bg7 3 Nc3 d6 4 f4 Nf6 5 Nf3 0-0 6 Be3 Nbd7

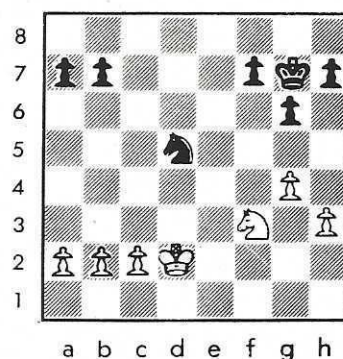
At the ICU Easter Invitation 1979, the Welsh IM, George Botterill, tried 6...Na6 against John and lost as follows:
7 e5 Ng4 8 Bg1 c5 9 h3 cd4 10 Qd4 Nh6 11 g4 Bd7 12 0-0-0 Bc6
13 Qe3 Qa5 14 Rh2 Rfc8 15 Bf2 Nb4 16 Kbl Nd5 17 Nd5 Bd5
18 a3 Bf3 19 Qf3 de5 20 Rd5 Qa4 21 Be3 e4 22 Qd1 e6
23 Rd7 b5 24 Rhd2 Qa5 25 Rb7 Rcb8 26 b4 Qa3 27 Rb8ch Rb8
28 Rd8ch Bf8 29 Bc5 (1-0).

7 h3 c5 8 e5 Nh5 9 g4 cd4 10 Qd4 Ng3 11 Rg1 Nf1 12 Rf1 Qa5
13 Qd5 Qd5 14 Nd5 de5 15 0-0-0 ef4 16 Ne7ch Kh8 17 Bf4 Nb6
18 Nc8 Rac8 19 Be5 Nc4 20 Bg7ch Kg7 21 Rd7 Ne3 22 Rf2 Rfd8
23 Rd8 Rd8 24 Rd2 Rd2 25 Kd2 Nd5

(See diagram opposite)

So far Black has always been on the brink of equalising but now White plays a masterly endgame to bring about the win.

26 c4 Nf4 27 h4 h5 28 gh5 Nh5 29 Ke3 Kf6
30 b4 Ke7 31 a4 a6 32 a5 Ng7 33 Kd4 Ne6ch
34 Kd5 f6 35 Nel Kd7 36 Id3 Ng7 37 hf4 g5
38 b5 Nf5 39 Ng2 Nb6 40 c5 f5 41 Ke5 f4
42 Nel Kc6 43 Rf3 Kb5 44 Ng5 Kb4 45 Kf4 Kc5
46 Ne4ch Kd5 47 Kg5 Nf7ch 48 Kf6 h6
49 Kg6 (1-0).



Crowe - Salter

French Defence

1 e4 e6 2 d4 d5 3 e5 c5 4 c3 Qb6 5 Nf3 Bd7 6 Be2 Bb5
7 c4 Bc4 8 Bc4 Qb4ch 9 Nbd2 dc4 10 a3 Qb5 11 0-0 cd4
12 Nd4 Qd5 13 Ndf3 a6 14 Qe2 Bc6 15 Rd1 Rd8 16 Bg5 Rc8
17 Nf5! Qc5 18 Qd2 Qd5! 19 Qe3 Qb5 20 Qd2 Qd5 21 Qf4 Qc5
22 Nd6ch Bd6 23 ed6 Nb8 24 d7ch Nd7 25 Rd7 Kd7 26 Ne5ch
Kc7 27 Qf7ch Ne7 28 Be7 Qd5 29 Bc5ch (1-0).

P.Short - C.Barry

Queen's Gambit Accepted

1 d4 d5 2 c4 dc4 3 Nf3 Nf6 4 e3 e6 5 Bc4 a6
6 O-O c5 7 Qe2 Nc6 8 Rd1 Qc7 9 Nc3 Bd6
10 h3 O-O 11 dc5 Bc5 12 e4 Ne5?!

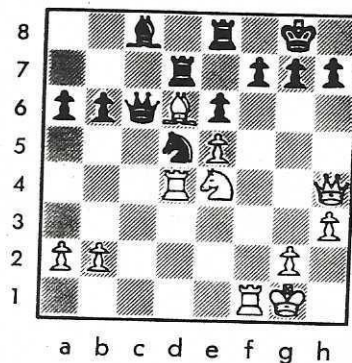
A clever idea based upon winning a pawn in broad daylight but White is only too happy to sacrifice it.

13 Bf4! Nf3ch 14 Qf3 Bf2ch 15 Qf2 Qc4
16 Bd6

White is a pawn down but has the initiative, Black is behind in development and is appallingly weak on the dark squares.

16... Re8 17 Rd4! Qc6 18 e5 Nd5 19 Ne4 b6
20 Rf1 Ra7 21 Qh4 Rd7 (See diagram)
22 Nf6ch! gf6 23 Rg4ch Kh8 24 Qh6 Rg8
25 Rg8ch Kg8 26 Qf8 mate!

A very stylish win by Short over this years runner-up.



Curtin - McElligott

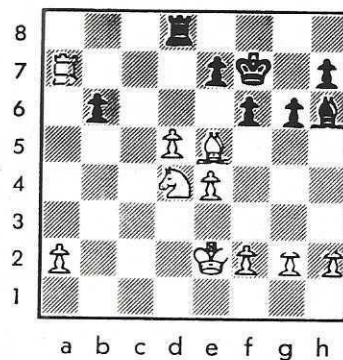
Grunfeld

1 d4 Nf6 2 c4 g6 3 Nc3 d5 4 Bg5 Ne4 5 Bh4 c5
6 cd5 Nc3 7 bc3 Qd5 8 e3 Bg7 9 Qf3 Qf3 10 Nf3
cd4 11 cd4 Nc6 12 Rb1 b6 13 Eb5 Bd7 14 Ke2 Na5
15 Rhc1 Bb5ch 16 Rb5 Kd7 17 Rd5ch! Ke6 18 e4 f6

Black faces the constant nuisance of having to defend his e pawn in the Bh4 variation, but now his bishop is immobilised.

19 Rc7 Rhd8? 20 Rd8 Rd8 21 d5ch Kf7 22 Ra7 Bh6
23 Bg3 Nc4 24 Nd4 Ne5 25 Be5 (1-0).

25...fe5 26 Nc6 is hopeless for Black. A model game for white in this variation.



Dunne - Curtin

Reti

1 Nf3 d5 2 c4 c6 3 b3 Nf6 4 Bb2 Bg4 5 e3 Nbd7
6 Be2 e6 7 O-O Bd6 8 d4 O-O 9 Nbd2 Re8 10 h3
Bh5 11 Ne5 Be2 12 Qe2 Ne4 13 Ne4 de4 14 Rad1
f5 15 Nd7 Qd7 16 f4 Rad8 17 g4 Qf7 18 Rf2 Rd7
19 Rg2 Red8 20 Qc2 Bf3 21 Kh2 h6 22 Rdl Kh8
23 g5 hg5 24 Rg5 Be7 25 Rg6 Bf6 26 Ba3 Kg8
27 Qe2 b6 28 b4 a6 29 Qh5 b5 30 c5 Kf3 31 Qh7
Rd5 32 Bb2 R(3)d7 33 Qh8ch Rf7 34 Rg7 Ke8
35 Rf7 (1-0).